

## ACCEPTANCE-BASED YOUTH WORK ADDRESSES YOUNG PEOPLE AND ADOLESCENTS

- » from a wide range of milieus and scenes
- » who define themselves as cliques or congregate in groups
- » who are not reached adequately by other youth work or no longer reached by them at all
- » for whom public spaces have become their main centre of activities and where they spend their leisure time



## WE PROVIDE

- » Outreach youth work projects throughout Bremen
- » In a context of cliques and scenes e.g.: youth policy lobbying, gender-sensitive work, help with starting work, advice on the subject of migration, conflict mediation
- » Initiatives and projects with young people from different youth scenes and parts of the city across cliques
- » Services for young refugees focussing on integration and meeting people
- » Social group work
- » Assistance e.g. for parents and relatives of young people in the context of right-wing extremism and religious extremism: information, material and advice
- » Presentations, workshops and information on what the teams' work focuses on and everything to do with youth cultural milieus
- » Projects in cooperation with schools and other institutions

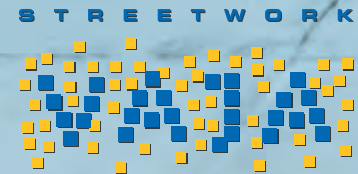


## STREETWORK

- » Using streetwork as its method, VAJA enters into the world of young people, making contact and helping them cope and organise their lives.
- » Some help is given directly, e.g. through counselling. VAJA also acts as a link to conventional services and institutions involved in social work, which are often rejected by young people. Additionally, the work always focuses on activating young people's self-help capacity.
- » VAJA regards streetwork as an interventional but above all, preventative method of youth work. By creating a sense of belonging, participation and recognition, it strives for the (re)integration of young people into local societal and social contexts.

## YOUTH POLICY INITIATIVE

- » VAJA is represented in working parties, youth policy bodies and the professional public in order to create a local and national lobby for young people.
- » The problems faced by young people are closely connected to developments in the whole of society.
- » Part of VAJA's objective is to keep on publicising and discussing this connection.



Akzeptierende Jugendarbeit  
[www.vaja-bremen.de](http://www.vaja-bremen.de)

**VAJA – VEREIN ZUR FÖRDERUNG AKZEPTIERENDER JUGENDARBEIT E.V.**  
HINTER DER MAUER 9 | 28195 BREMEN | 0421 76266  
INFO@VAJA-BREMEN.DE | WWW.VAJA-BREMEN.DE

ACCOUNT FOR DONATIONS: SPARKASSE BREMEN  
IBAN DE40 2905 0101 0081 6524 63 | BIC SBREDE22XXX

[WWW.FACEBOOK.COM/VAJA.BREMEN](https://www.facebook.com/vaja.bremen)  
[WWW.INSTAGRAM.COM/VAJA\\_STREETWORK\\_BREMEN](https://www.instagram.com/vaja_streetwork_bremen)

# STREETWORK WITH YOUNG PEOPLE IN BREMEN

**VAJA – ASSOCIATION TO PROMOTE ACCEPTANCE-BASED YOUTH WORK**  
[WWW.VAJA-BREMEN.DE](http://WWW.VAJA-BREMEN.DE)

## THE ASSOCIATION

The Association to promote acceptance-based youth work was established in 1992. Since then, it has become the biggest provider of streetwork / outreach youth work in Bremen. Six teams are involved in outreach in the city area. The services provided by VAJA also include an advice centre.

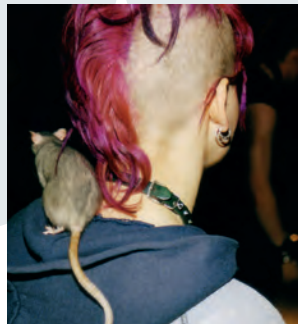
## OUTREACH

The **lifeworld of young people** is at the centre of what we do.

We go where young people meet up e.g. playgrounds, shopping centres, bus stops, parks



## ACCEPTANCE-BASED



Acceptance is a **method of accessing** young people. Intolerant, problematic and self-damaging attitudes and behaviours are changed over the course of a social education process, not at the beginning.

## FOCUS ON CLIQUES AND SCENES

For many young people, the clique is the **most important agent of socialisation**.

This is where perceptions and attitudes are shared and strengthened. Positive and negative clique processes are included in the work.



## FOCUS ON RELATIONSHIPS



**Trust is the prerequisite** for supporting young people in their everyday lives.

This is the only way to confront them with other attitudes, behaviours, conflict solution strategies, leading to a process of change.

## FOCUS ON COMMUNITY

**Working with lots of institutions** is a key condition for our work. This is the only way to have a positive impact on the lifeworlds of young people, develop new provisions and use existing resources more effectively.



Photo: Jens Hagens Fotografie

# OUR TEAMS



## STREETWORK / OUTREACH YOUTH WORK

### Regional Team East

Outreach youth work in East Bremen  
[rost@vaja-bremen.de](mailto:rost@vaja-bremen.de)

### spot.

Streetwork.Prevention.  
Orientation.Taking Part.  
[spot@vaja-bremen.de](mailto:spot@vaja-bremen.de)

### Regional Team South

Outreach youth work in South Bremen  
[sued@vaja-bremen.de](mailto:sued@vaja-bremen.de)

### Team sub-culture

Streetwork with sub-cultures  
[sub@vaja-bremen.de](mailto:sub@vaja-bremen.de)

### Regional Team Central/ West

Outreach youth work in Central / West Bremen  
[mitte-west@vaja-bremen.de](mailto:mitte-west@vaja-bremen.de)

### connect

Prevention and Integration through outreach work with young refugees  
[connect@vaja-bremen.de](mailto:connect@vaja-bremen.de)

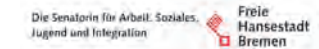
## ADVICE

### Specialist and Advice Centre ADERO

Specialist and Advice Centre for families, professionals and affected persons in tackling religious extremism  
[adero@vaja-bremen.de](mailto:adero@vaja-bremen.de)  
[www.adero-bremen.de](http://www.adero-bremen.de)

## SPONSORS & PARTNERS

VAJA is sponsored by:



VAJA is a member of the umbrella association:



ADERO:



in cooperation with:



VAJA wird unterstützt durch:

